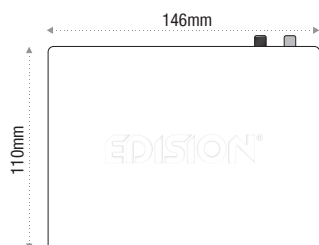


## Congratulations on purchasing an EDISION OS NINO PRO S2X + T2/C

Please note that this information is valid at the time of publication.

Current information and detailed user manuals can be found on the Internet at: [www.edision.gr](http://www.edision.gr)

## 1 Unpacking



Remote control with 2 AAA batteries



Documentation



Service note

Please contact your EDISION specialist dealer for any further support and service.

### Receiver EDISION OS NINO PRO S2X + T2/C

**Notes:** The front is factory fitted with a protective foil which can be removed easily and with caution. (Protective foil only for devices with display)

The scope of delivery may also include parts not listed here

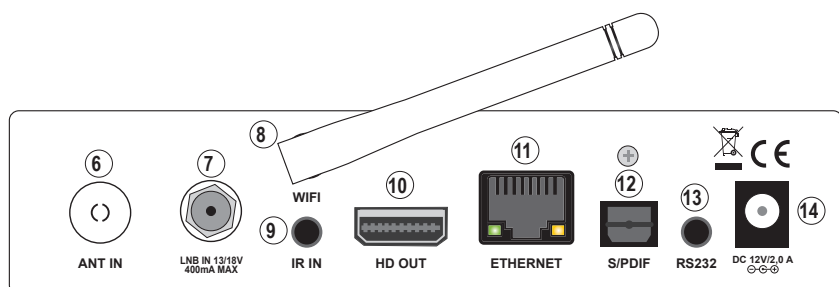
### Front Panel

- ① POWER button: Activates/Deactivates the device
- ② CH- / CH+ buttons: for moving in the program lists
- ③ Infrared sensor for the reception of remote control commands
- ④ Display LED, displays current information
- ⑤ Card reader



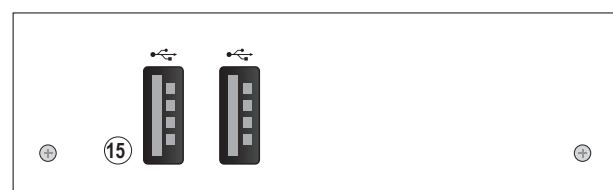
### Back Panel

- ⑥ Input for connecting to terrestrial or cable signal from the antenna
- ⑦ LNB IN: Connection for the coaxial cable to the signal from the satellite system
- ⑧ WIFI: External Antenna 2.4GHz
- ⑨ IR IN: Infrared connection port
- ⑩ HD OUT: Connection to an HDTV quality TV
- ⑪ ETHERNET: Ethernet port RJ45 10/100 Mbps
- ⑫ S/PDIF: Audio interface for amplifier/audio console
- ⑬ RS 232: For connecting to a PC, using RS-232 cable, for receiver software update
- ⑭ Connection for an adapter (DC 12V/2,0A)



### Subpage

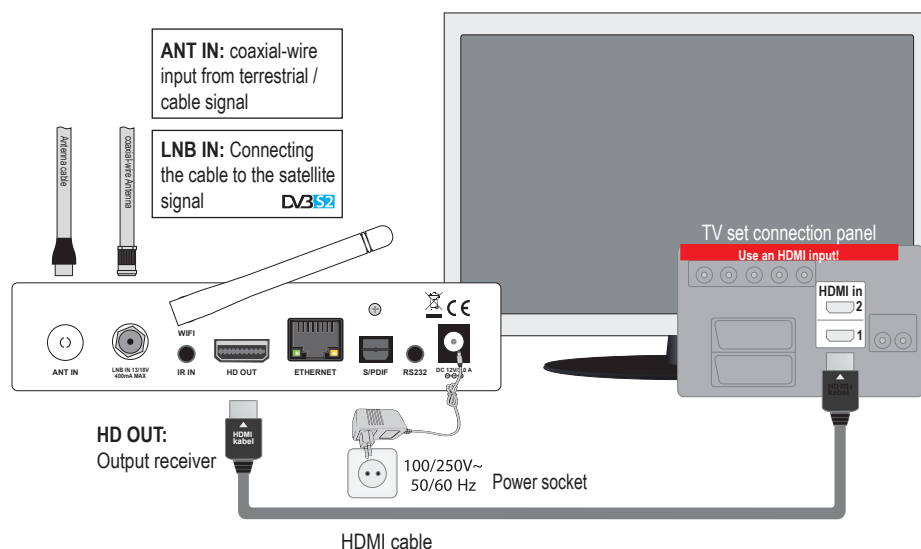
- ⑮ USB: / 2 x USB: Connection for USB storage devices



## 2 Connecting and switching on

**Note:** For interference-free satellite TV reception, a specialist technician must calibrate your satellite TV system with a digital TV level meter

- Connect the receiver using **HDMI cable** via the HD OUT output port to your TV's HDMI input port
- Now connect the receiver to the satellite antenna cable via the **ANT IN** or **LNB IN** input.
- Insert the batteries into the remote control. Notes on the remote control can be found on the back of these instructions.
- Connect the receiver to the power supply.
- The receiver starts with the BOOT process and is operational within a short time



### 3 Remote Control UNIVERSAL 1 PRO

EDISION UNIVERSAL 1 PRO REMOTE CONTROL is compatible with all EDISION STB's\*, plus it is pre-programmed with 5 basic functions for SAMSUNG & LG\*\* tv sets. Alternatively, you can program its 5 programmable buttons to any 5 functions of your TV.



#### Power

Switches between operation and standby



#### < (PREV)

Return to the previous channel/service or move to the end of the Service List or the Play List



#### Help

This provides users with a quick guide of using Edision OS nino



#### Menu

Open main menu & select sub menu using by navigation buttons



#### EXIT

Close and return to the previous menu and screen



#### RADIO - TV

Switch to TV mode.  
Switch to Radio mode



#### COLOR BUTTONS

Activates certain menu functions.  
Usage instructions are shown in each OSD menu



#### Audio

Select an audio track and a sound mode



#### PLAY

Starts timeshift if available



#### REC

Activates immediately recording-option



#### NUMERIC KEY (0-9)

Control the numerical operation and change the Channel/Service number directly



#### > (NEXT)

Go to the next channel/service or move to the beginning of the Service List or the Play List



#### TIMER

Start timer function



#### INFO

Displays the Electronic Program Guide (EPG) information if provided



#### EPG

Displays the Electronic Program Guide (EPG) information if provided



#### Mute

Mutes or unmutes the audio temporarily



#### TEXT

Switch between the teletext and TV modes



#### SUBTITLE

Display the subtitle language list

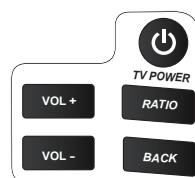
**Notes:** Many of the listed buttons have multiple functions, which, are displayed in the menus. Some buttons and functions are optional. Important functions and buttons are briefly explained below. The buttons to be used are marked in red in the diagrams.

## MANUAL INSTRUCTION FOR LEARN REMOTE CONTROL EDISION UNIVERSAL 1 PRO

Your set-top-box remote control has 5 learning-function keys, in the up right hand side TV keypad panel area. Each one can be used accordingly as the following example:

1. Turning your TV set ON/OFF [TV POWER]
2. Selecting screen RATIO [Auto, 16:9, 4:3, etc]
3. Increasing/decreasing volume [VOL+ , VOL-]
4. Command confirmation [BACK or EXIT]

The other 48 keys are for the control of the EDISION set-top-box.



### SET UP FOR LEARNING FUNCTION

- Press [TV POWER] key in the up right hand side TV keypad panel area continuously for 5 Sec. until the LED lights up and keep lighting, then release the key. This means the remote control is in the learning mode.
- Within 10 seconds, press the key in the original TV IR control, which needs to be learned, for example the [POWER] key, then the red LED is flashing. It means this button is ready to receive the learning signal.
- Aim the emission port of the original TV remote control at the front at the emission port at the front of your set-top box remote control (distance between these two ports has to be about 2~3 CM).
- Then press the key which is to be learned in your original TV remote control, for example the [POWER] key of your original TV remote control continuously for 3 seconds. If the red LED flashes quickly for three times and keep lighting, it means the set-top box remote control has succeeded in receiving the signal and you have completed the learning procedure of ON/OFF [TV POWER] key.
- Then release the [POWER] key of your original TV remote control.

If the copying procedure fails, the red LED will blink and stay OFF. In this case please repeat the procedure.

For the next programmable function, please repeat steps 1 to 3:

- Selecting screen ratio with RATIO [Auto, 16:9, 4:3, etc]
- Increasing/decreasing volume [VOL+ , VOL-]
- Command confirmation [BACK or EXIT]

Now you can operate your TV with the 5 programmed by you keys of your set-top box remote control. During the operation, the LED will flash to indicate that the signal is transmitted!

\* For EDISION STB compatibility, please visit our webpage

\*\*LG & SAMSUNG are brand names that belong solely to LG Electronics Inc. and Samsung Electronics Co., Ltd respectively. Any brand name reference in this text is only for informational purposes towards the consumer that is interested in the product.

Visit us on:

[www.edision.gr](http://www.edision.gr)